

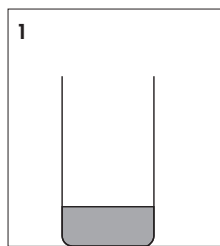
# Elektrode Cleaner (Art.-No. 003.01.300)



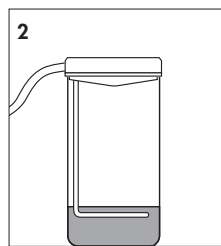
In case the anode or the sensor are covered with gold, they have to be cleaned with our Electrode Cleaner.

**⚠ Please note: The Electrode Cleaner has to be used sparingly!**

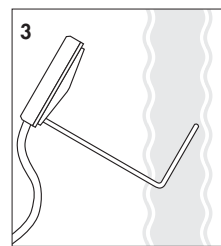
## Usage Instructions:



1 Fill the Electrode Cleaner in an appropriate beaker – the filling quantity only has to cover the gold covered parts of the anode and/or the sensor.

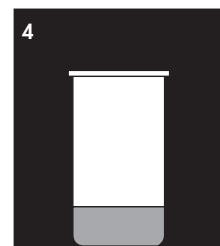


2 Leave the anode and/or the sensor for 1 hour in the beaker – it is not necessary to move it!



3 After one hour take it out and rinse the anode and/or the sensor well under running water. Then steam it and let it dry.

**⚠ Take care that all other parts of the galvano head to not get in touch with any liquid or steam!**



4 The used Electrode Cleaner can be used again. Store it in a well closed jar in a dark, cool place.



**Gramm Technik GmbH**  
Dental Division  
Einsteinstrasse 4  
71254 Ditzingen-Heimerdingen  
Phone +49 (0)7152 5009-60  
Fax +49 (0)7152 5009-80  
www.electroforming.de

August 7<sup>th</sup>, 2013